



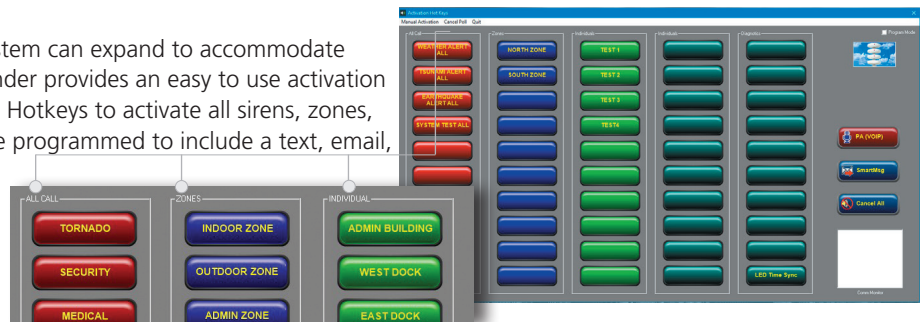
► Commander® On-Premises

Siren Control and Messaging System

The Commander siren control system offers both secure activation and status monitoring of any alert and notification system. From Giant Voice to Mechanical and Intelligent siren systems, Commander is designed to control, monitor, and link your warning system.

Federal Signal Commander continues to evolve to meet the challenging demands of customers throughout the world to provide a system unmatched in its features and ease of use. Commander offers Emergency Managers and system operators complete, secure activation and status monitoring of any siren system. From siren activation to in-building alerting, this system is designed to provide your facility with complete alert and notification capability.

From controlling 1 siren to 511, the system can expand to accommodate your changing needs. Federal Commander provides an easy to use activation screen. Administrators can program 50 Hotkeys to activate all sirens, zones, or individual sirens. Each Hotkey can be programmed to include a text, email, or voice message. A single Hotkey can activate sirens and send informational messages simultaneously.



Categorize hotkeys to activate as all sirens, zones, or individual sirens.

FEATURES

- Control of municipal, county and state siren systems
- Control of Giant Voice systems
- Control of Intelligent Systems
- PC or Server based system
- Controls up to 511 sirens
- Support for analog, digital (P25/Tetra), IP, cellular, satellite and landline communications
- Modbus compatible
- App and web based control using optional CommanderOne
- Secure communications with 128 & AES 256 encryption and time-based encryption
- Custom user interface for your specific application

Commander can be integrated as a fully compliant APCO Project 25 (P25) two-way communications outdoor/indoor warning system.

Commander has integrated networking and messaging capabilities.

- Networking allows the system to operate radio systems and IP systems simultaneously.
- Messaging provides personalized alerts to devices such as cell phone, computer, pager, handheld radio, etc. Messaging provides additional information to key personnel or to citizens.

Activation of sirens based on polygons from National Weather Service is provided using the CommanderOne web based control. CommanderOne integrates automatically with your local siren activation system to provide “anywhere” activation, control and monitoring.

Siren Controllers are available for both electronic sirens, speakers, and electromechanical sirens. These controllers come equipped with over-the-air programmability via secure digital technology.

Commander® On-Premise Siren Control and Messaging System (SFCD)



SPECIFICATIONS

- RTU Capacity:** Up to 511 siren RTU's
- Communications:** Analog, Digital, P25 radio systems
Cellular, satellite, IP networks, Landline communications
- Security:** Time based encryption, 128 bit/256 bit AES encryption. User, password and role based security.
- Hardware Activation:** SS2000+ local activation point.
Siren activations using Intelligent System Informers
- RTU types:** Mechanical, Ultravoiced giant voice systems, and Intelligent Systems using Informer product line
- Giant Voice:** Live PA, Text-to-speech and WAV file broadcasts
- Intelligent Systems:** Informer product line Desk / Wall / Rack / Outdoor Systems Two-way Intercom and recording
Custom and specialized alert and notification systems
- Zoning:** Unlimited zone creation
- System:** Alarm logging and reporting of siren activation and monitoring using customized maps
- Language:** English default with optional multi-language support
- System Backup:** Create and restore system back up files

HOW TO ORDER

Description	Part Number
Windows application software:	
for up to 10 sites	SFCD10
for up to 25 sites	SFCD25
for up to 255 sites	SFCD255
for up to 511 sites	SFCD512

OPTIONAL ACCESSORIES

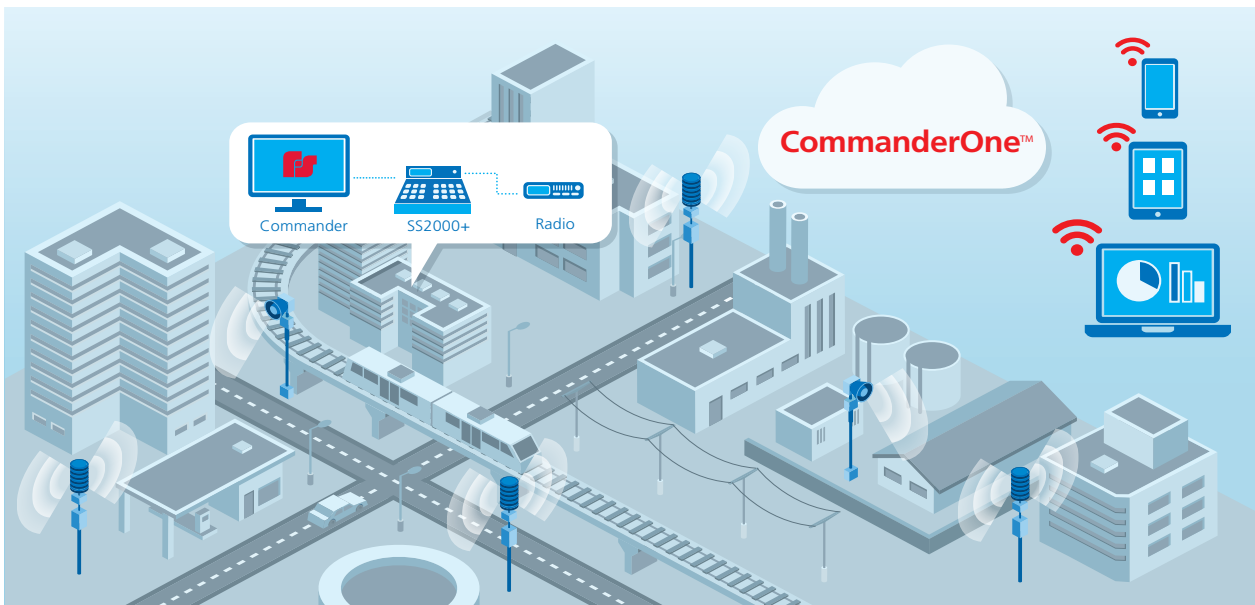
Description	Part Number
Warranty, up to 10 sites	SFCD-W10
Warranty, up to 25 sites	SFCD-W25
Warranty, up to 255 sites	SFCD-W255
Warranty, up to 511 sites	SFCD-W511
Upgrade, to 25 sites	SFCDUPI
Upgrade, to 255 sites	SFCDUPII
Upgrade, to 511 sites	SFCDUPIII
TCP/ IP client software (5 seats)	SFCDCLNT
Client software extended one-year warranty	SFCDCLNT-W
Modem	MODEM-MSK
Server with Windows®, 22" flat screen monitor	X-PCS-1
120V Uninterruptible Power Supply	X-UPS
Desktop Controller	SS2000+

► CommanderOne®

Cloud-Based Control for Warning Systems

CommanderOne® is the latest innovation that allows you to connect with your most critical asset anytime, anywhere. The CommanderOne cloud-based platform enables you to monitor and control your warning sirens from any desktop or mobile device. It offers real-time data with actionable insights, enabling you to make important decisions quickly.

We understand that replacing a legacy infrastructure with new smart devices may be cost prohibitive, therefore, CommanderOne leverages your existing Federal Signal warning system and makes it smarter. With its simple dashboard and intuitive interface, CommanderOne is designed to make your mission successful in critical moments. CommanderOne is easily integrated with your existing Commander On-premise system. CommanderOne communicates with your system through a secure network communications interface. As changes occur with the On-Premise system those changes are mirrored on the cloud-based control system. Siren activation and monitoring can occur from anywhere from virtually any device. The map interface provides status indications with manual activations or user-defined polygons. Automatic or prompted weather based polygons siren activation is available for all CommanderOne users.



User Experience – The Intuitive Interface is simple to set up, always up-to-date, and connects to your on-premise Commander control system.

Map-based Activation – Location of sirens and their status is critical. Use the geo-intelligent interface to see an overview of your system.

Desktop Freedom – Access your system from any computer connected to the internet.

Mobile – A user-friendly app for iOS and Android. It has a web-based console with a mobile responsive GUI.

Security – We understand that security is your top priority. CommanderOne utilizes IPSEC over SSL with a multi-layered authentication mechanism.

Weather Activation – All CommanderOne systems will have access to activate sirens based on weather-based polygons.

Auto-Sync Hotkeys – No need to keep multiple locations synchronized, your Hotkey activation settings are automatically created in CommanderOne.

Messaging – Keep in contact with employees and first responders via email, SMS, and voice. Create on the fly messages or templates to streamline your workflow.

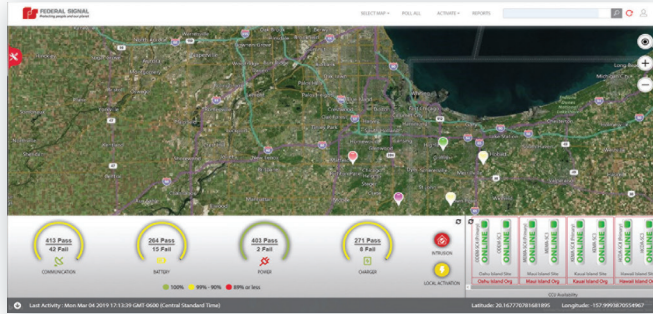
Scalability – CommanderOne platform is scalable from a few devices to hundreds of devices. It leverages a global network of data centers to maintain availability while securing your data.

CommanderOne® Cloud-Based Control for Your Warning Systems

Desktop and Mobile

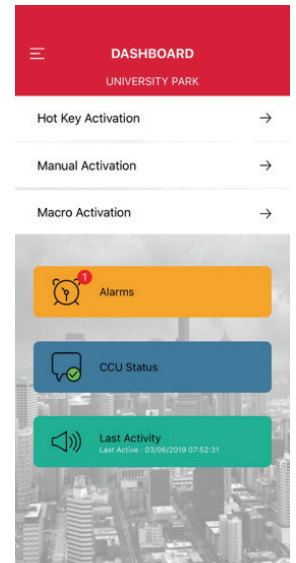
Desktop

The dashboard is designed to give you the status of the system in seconds. It utilizes Bing Maps, and its responsive design enables colored icons to reflect the status of each site and control point. Each status monitor is color-coded to quickly gain insight about your system.



Mobile

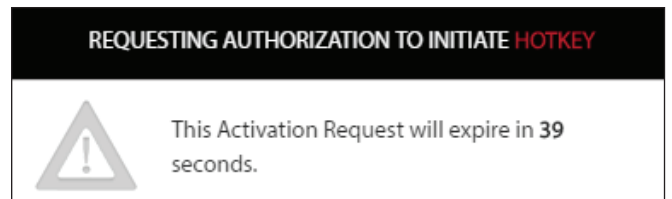
Native iOS and Android apps let you control and monitor your system from virtually anywhere. It shows all the alarms by a single click. Just like other apps, the system can be refreshed with a slide of a finger.



Security

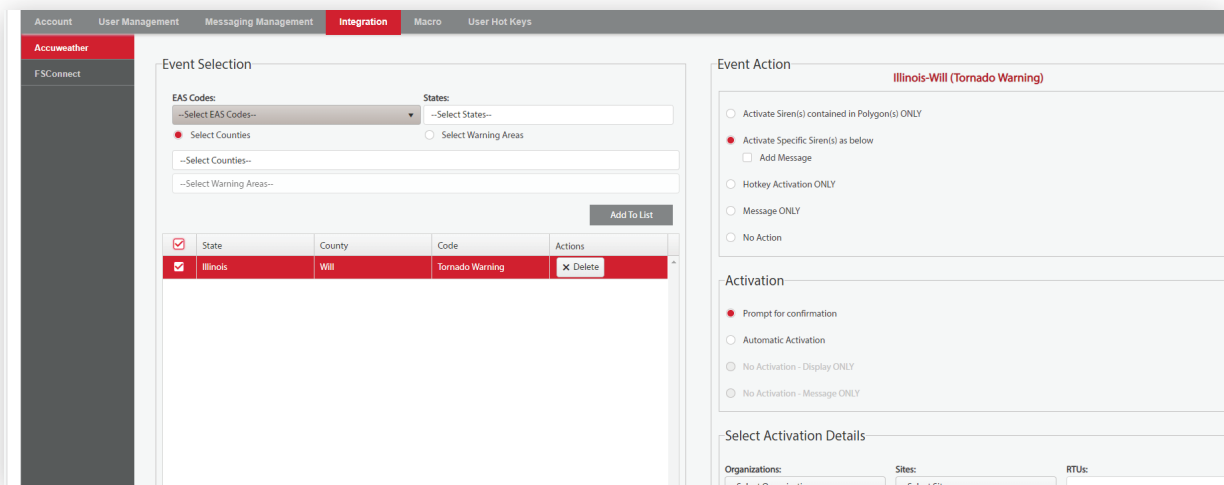
CommanderOne is secure by design. We use One Time Passwords, Token-Based Security and industry standard SSL to secure your communications.

Our new Multi-User Authentication takes security to the next level by allowing you to configure Hotkeys, Macros or Functions with an authorization level, which require varying levels of authorization: from simple passwords to app-based authentication. This means that you can set-up CommanderOne so that no one activates a function without another person verifying that activation, like two people needing their keys turned at the same time to open a locked door.



Weather

CommanderOne Accuweather® brings automatic and prompted activation based on weather events. Using a simple 'if this then that' interface, you choose them from events, such as a 911 telephone outage to a Winter Weather Advisory and the actions associated with them. From the Accuweather interface, you can send a simple message to your staff when watches are posted in surrounding counties, or activate the sirens when National Weather Service posts a Tornado Warning.



CommanderOne® Cloud-Based Control for Your Warning Systems

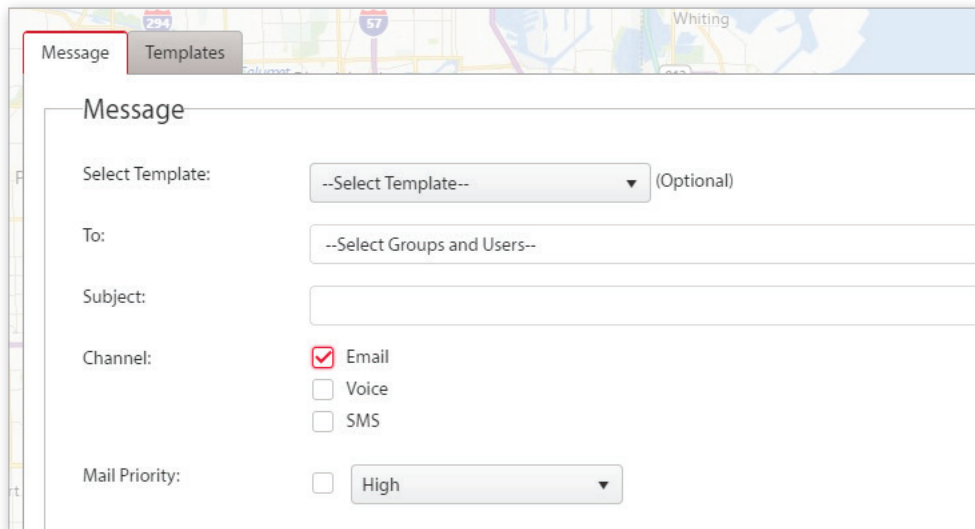
Messaging

CommanderOne Messaging is a new addition to the CommanderOne Cloud-Based Control system. Messaging adds the ability to quickly and easily contact your employees using our CommanderOne activation systems, either via the web or mobile app, on your smartphone.

Messaging allows users to create templates, ad-hoc messages and even dynamically add phone numbers or emails at the time of message creation. Utilizing CommanderOne macros, you can activate a siren Hotkey and at the same time, a messaging template. Templates allow for operators to create scenarios ahead of time, adding all users and information in a ready-to-go, one-button activation.

Messaging add-on is designed around you and your first responders, by keeping it simple and easy for you to message your crew while activating the sirens. With simple, easy to understand plans, administrators can add messaging to their existing CommanderOne systems.

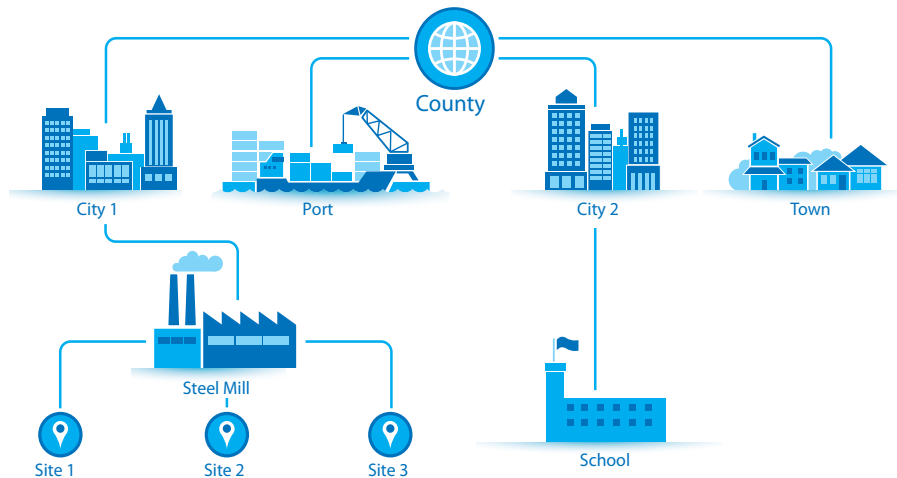
Messaging builds upon the strengths of the CommanderOne platform and can allow administrators to send out operational alerts and automated messages the moment NOAA issues alerts.



The screenshot shows a web interface for creating a message. At the top, there are tabs for "Message" and "Templates". Below the tabs, the form is titled "Message". It includes the following fields and options:

- Select Template:** A dropdown menu with "--Select Template--" and "(Optional)" next to it.
- To:** A dropdown menu with "--Select Groups and Users--".
- Subject:** A text input field.
- Channel:** Three radio button options: Email, Voice, and SMS.
- Mail Priority:** A dropdown menu with "High" selected.

Scalable Centralized Command and Control



CommanderOne is designed for a centralized command and control by managing disparate systems. Whether you have one site or multiple sites, you need a single dashboard to monitor and manage your network.

Select CommanderOne Model for Annual Subscription

	Standard	Professional	Enterprise
Model Number*	COMMANDER1-S	COMMANDER1-P	COMMANDER1-E
Number of Users¹	5	20	Per quote
Number of Organizations	1	2-5	5+
Accuweather included	Yes	Yes	Yes
In Release Commander Upgrade	Yes	Yes	Yes

*Includes Remote Implementation Support. For on-site support and training, contact your Federal Signal representative for a quote.

CommanderOne with Messaging Annual Subscription

	Standard
Model Number*	COMMANDER1-SM
Users¹	5
Messaging Recipients²	200
Messages Per Month	500

*Includes Remote Implementation Support. For on-site support and training, contact your Federal Signal representative for a quote.

¹ Users: Users defined as full ability to activate and create messages also includes CommanderOne APP. (Admin has ability to control USER rights)

² Recipient: Recipient defined as having the ability to receive messages via text or email.



► SS2000+ Series C

Local Hardware Activation Point

The SS2000+ Series C web enabled controller is Federal Signal's most advanced stand-alone control unit. The SS2000+ typically interfaces to an analog or digital radio system to provide radio activation of sirens across a county, municipal, campus or industrial facility. The SS2000+ has 24 programmable activation button "hotkeys" secured with a keylock switch and 20 contact closure inputs for interfacing with remote control systems. The hotkeys can provide specific types of warnings or test activations to notify residents, employees or students. The 24 Hotkeys are now accessible from a variety of interfaces using a new web interface. The new web interface can provide improved redundancy allowing multiple SS2000+ units to be used as on-line back-ups. Advanced networking features enable the SS2000+ to be connected to Federal Signal's Commander® control and status monitoring software. In addition, the SS2000+ can now connect directly to Federal Signal's CommanderOne® cloud service for secure web access to hotkeys, messaging and automated activation from NOAA EAS events.

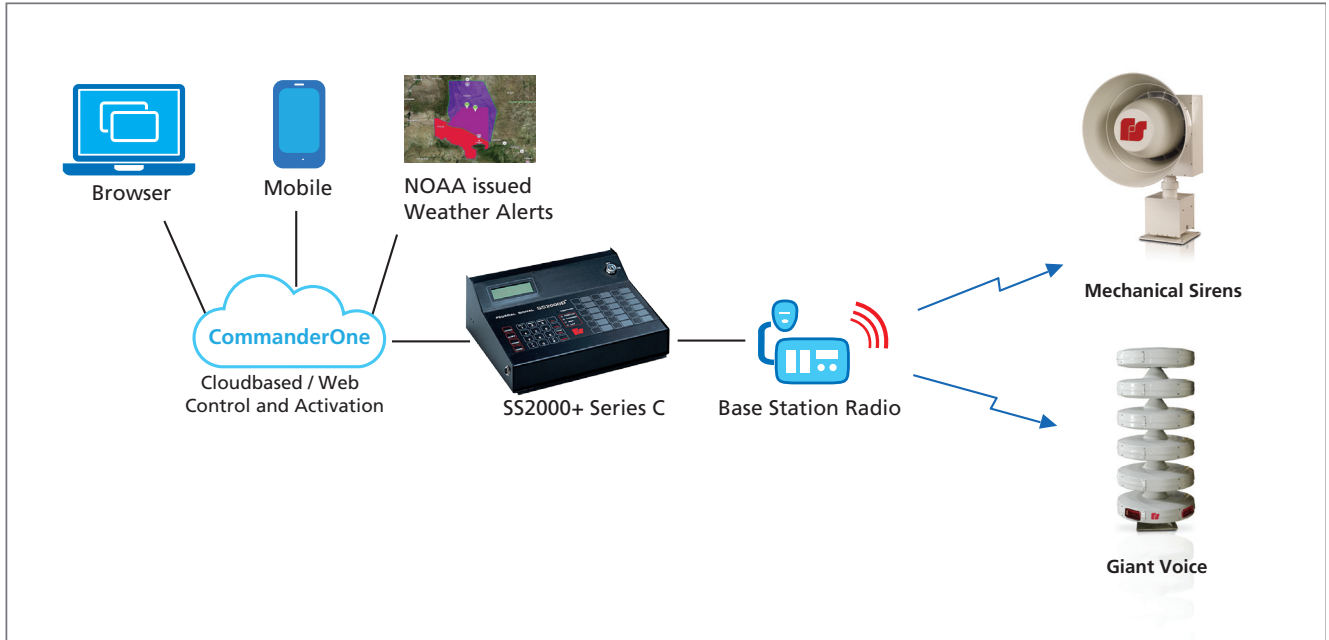
The SS2000+ can be used to as an encoder for one-way siren control. Previously using a SS2000+ allowed activation only from the front panel hotkeys, the physical interfaces or from a connected PC. The SS2000+ now provides siren activation from CommanderOne NOAA® EAS events/polygons, from a mobile app or from a web browser over the Internet.

FEATURES

- 24 command function hot keys with key-lock protection
- 20 remote activation inputs
- Dispatch console interface via URL
- Ethernet port for control over inter-company or intra-company LAN
- Interface to CommanderOne® web service for polygon and mobile activations
- MODBUS TCP Industrial Control Interface
- Microphone interface for Live PA
- Redundant source of command and control
- User Access Security with Digest Authentication
- Remote firmware update capability over LAN
- Computer Access Whitelist Feature
- SSL and AES data Encryption
- Compatible with radio two-tone EAS and DTMF, AFSK encoding
- Three Configurable Relay Outputs
- Streams WAV files from Commander® PC
- Built-in communication monitor speaker
- Radio level indicators simplify field adjustments
- Battery backed real time clock
- Back-lit LCD Display
- Desk and 19" rack mount versions available
- Offered in 120 and 240VAC, with EU or UK versions available

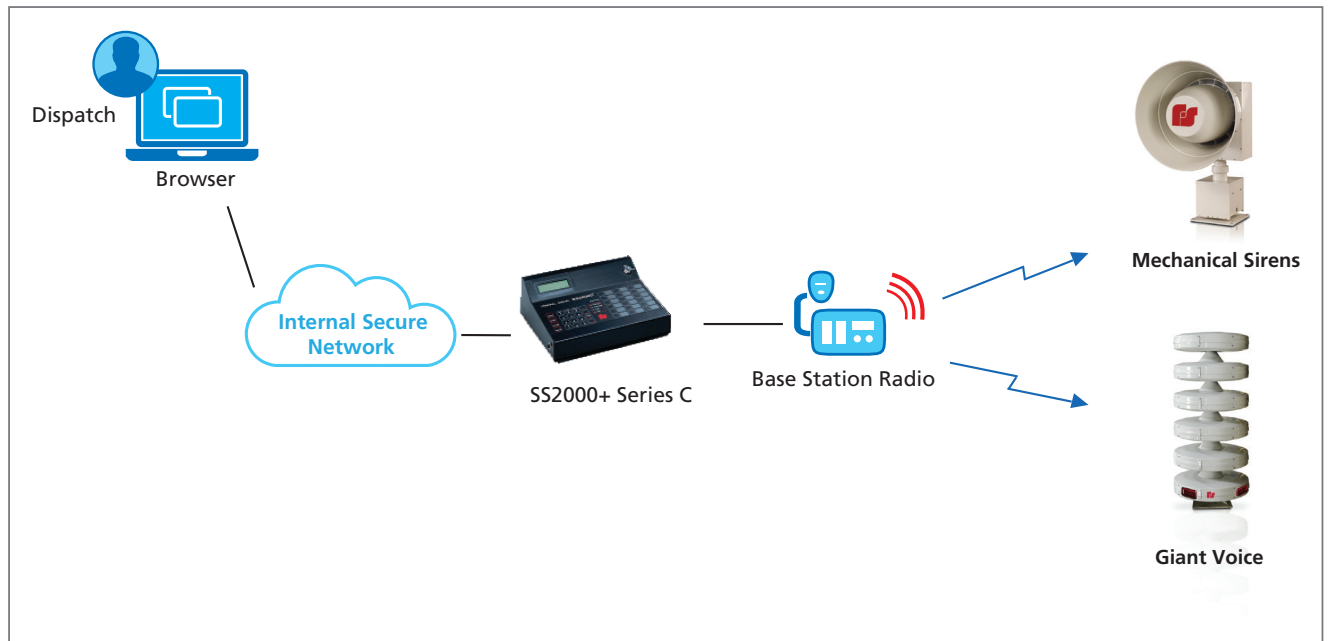
PC Freedom

Typical siren control systems rely on dedicated PC's or servers for activation. PC's can be difficult to maintain with updates and security concerns. Now you can have many of the features provided from a PC without the need to have a PC dedicated to activating your siren system. In addition, PC's can be a single point of failure within your siren control system. The SS2000+ can now interface to our CommanderOne control system and eliminate the need for a dedicated PC for siren control.



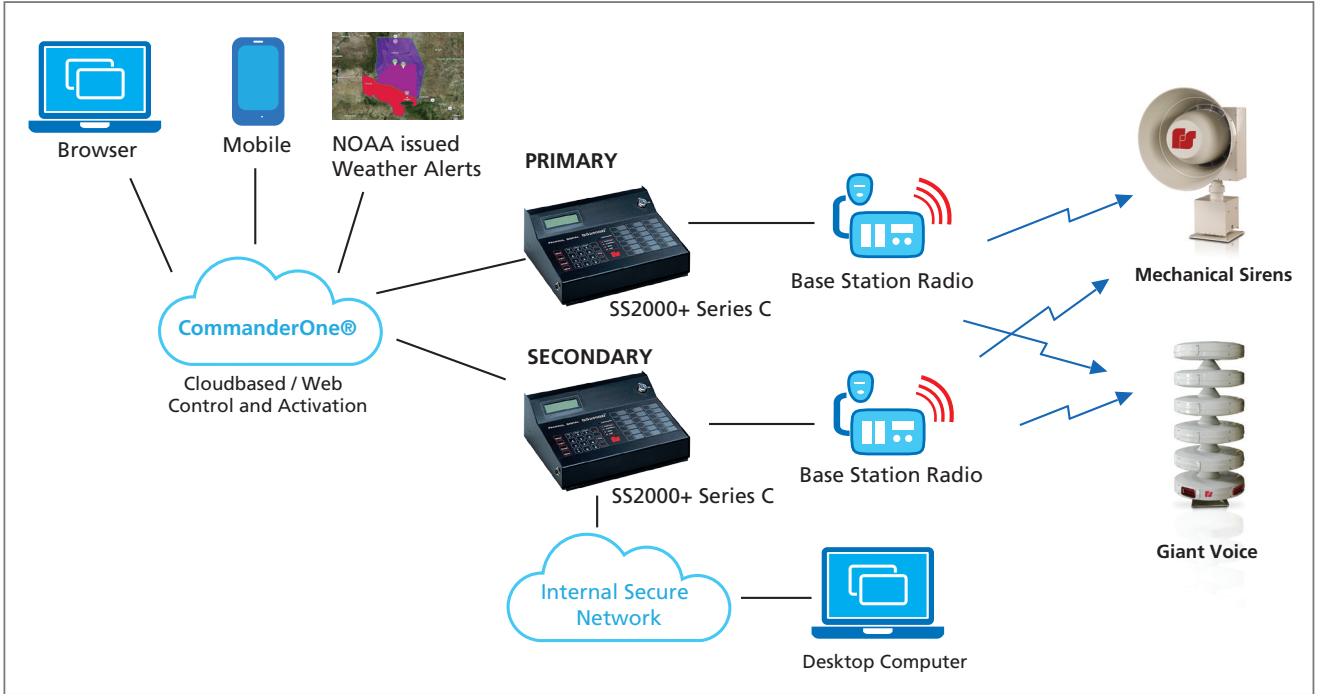
ACCESS VIA URL

Dispatch consoles can now access the SS2000+ from a new built-in web server that allows the SS2000+ to be controlled and configured over a LAN using standard web browsers. This interface can provide users within a secure company network to access the SS2000+ Hotkeys from standard web browsers (Chrome, Edge or Firefox) on the company local area network.



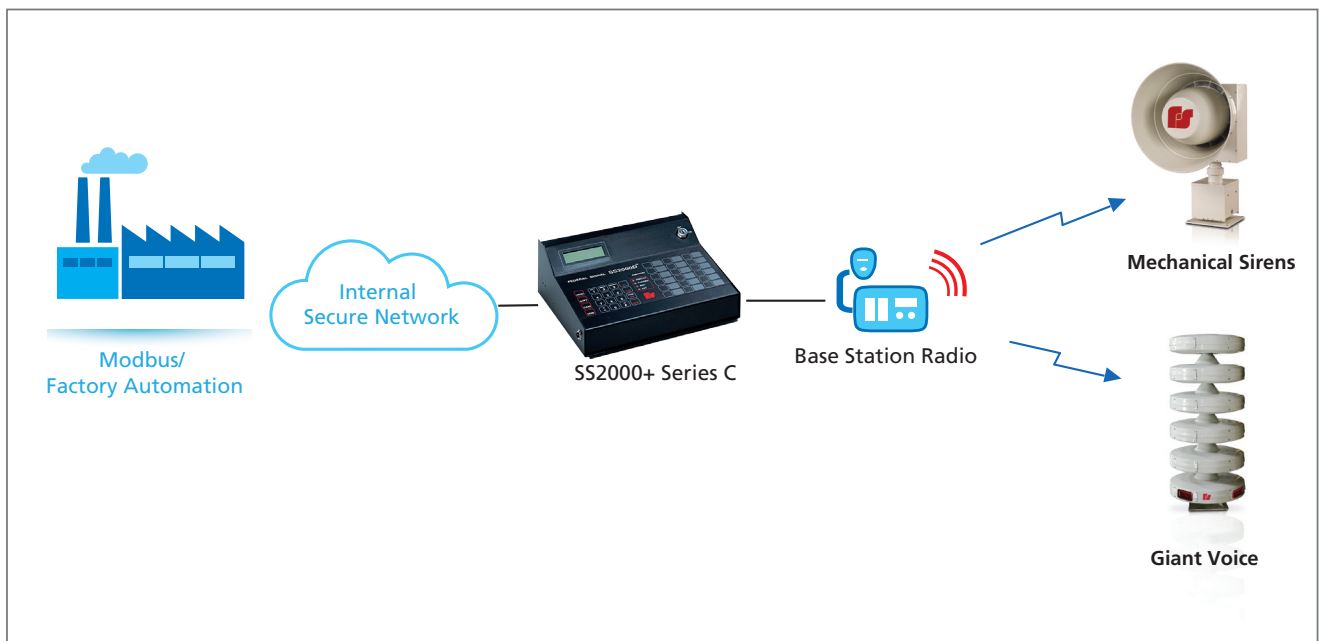
Web Enable Radio Controlled Sirens

The SS2000+ can be used to as an encoder for one-way siren control. Previously using a SS2000+ allowed activation only from the front panel hotkeys, the physical interfaces or from a connected PC. The SS2000+ now provides siren activation from CommanderOne NOAA EAS events / polygons, from a mobile app or from a web browser over the Internet.



MODBUS Control

The SS2000+ has a MODBUS interface to easily interface with Industrial Control Systems. MODBUS TCP is used to provide activations into an SS2000+ for specific warning announcements across an industrial plant. Users can activate the system using the SS2000+ or industrial control systems can activate the hotkeys.



SPECIFICATIONS

Operating Temperature:	32° F to 140°F	0° to 60°C
Line Input	120/240VAC* wall transformer power supply	
Power Supply Input Voltage:	12-30 VDC	(12 VDC minimum)
Input Current	300 mA (Standby 700 mA max.)	
Distortion	< 3.0%	
Ethernet	RJ-45 port, TCP/IP	
Microphone:		
Input Level	10mV - 150mV p-p	
Input Impedance	10k Ohms	
Input Jack	XLR Male	
Type	Dynamic	
Speaker:		
Power	1 watt	
Impedance	8 Ohms	
Audio Interface:		
Audio Output	Balanced 600 Ohms	
Audio Input	Balanced 600 Ohms	
Decode Sensitivity	< 8-10 dBc S/N or 12 dBc SINAD	
Relay Outputs	2A at 30VDC / 0.5 at 120VAC	
Dimensions H x W x D:		
Desk Mount	3.59" x 11.59" x 9.53" 91.8 mm x 294.4 mm x 242.1 mm	
3U Rack Mount	5.19" x 19" x 10.10" 131.8 mm x 482.6 mm x 256.5 mm	
Shipping Weight: Desk Mount	6 lbs	3 kg
Shipping Weight: Rack Mount	8 lbs	4 kg

* The SS2000+ Power Supply can be ordered with a US 120VAC or UK/EU 240VAC Power Cables, see description models.

HOW TO ORDER

Contact our Federal Signal Sales Engineers to design a system that meets your specific requirements.

Considerations for system configuration:

Description	Part Number
Desk mount Local Activation Point, US	SS2000+
Rack Mount Local Activation Point, US	SS2000+R
Desk Mount Local hardware activation point, EU	SS2000+EU
Desk Mount Local hardware activation point, UK	SS2000+UK
Noise Canceling Microphone	MNC-MNS ¹
CommanderOne Cloud Service	COMMANDER1LE

REPLACEMENT PARTS

Description	Part Number
SS2000+ Power Supply with US Cable	Q-SSPWR
UK 240VAC Power Cable ²	Q17501252A
EU 240VAC Power Cable ²	Q17501253A
SS2000+ Kenwood Radio Cable	Q17500863-01

¹ Noise canceling microphone model MNC-MNS replaces the microphone on early revision models of SS2000+. Model MNC-MNS is supervised for compatibility with UL2572.

² While there are no EU/UK rack mount models, the rack mount SS2000+R can be ordered with the appropriate replacement power cable, if needed.

► CommanderAssist®

Mass Notification Customized Messaging Software



Dynamic Messaging with series of decisions



Simplifies implementation of your Emergency Response Plan



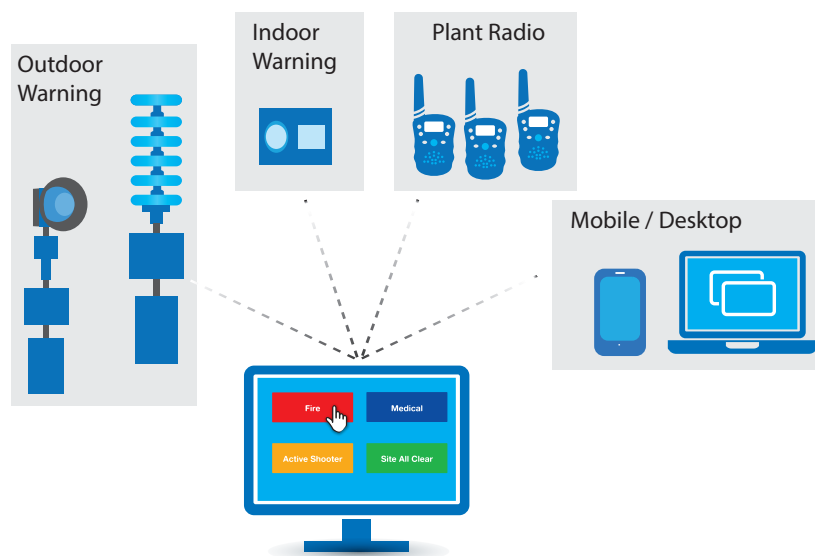
"1-click" activation screens with Hotkeys



CommanderAssist® is designed to take a complicated emergency situation and make it simple to manage. CommanderAssist expands Federal Signal Commander On-Premise Siren Control and Messaging System to a customized scenario-based interface.

Federal Signal works with you and your staff to create a custom menu to guide the user thru incident-based decisions. Messages are pre-recorded in precise segments such as "Fire In" and "Admin Area"; and the custom menu guides the user thru pre-determined areas, such as plant areas or counties to deliver a clear, consistent alert.

In combination with a voice-capable speaker, CommanderAssist becomes a powerful tool in your emergency plan. Pre-recorded messages and tones are deployed over Giant Voice speaker systems including Federal Signal's Modulator siren, Informer tone-alert devices, indoor speakers, and handheld plant radios for mass notification. Messages can also be delivered over via e-mail and text messaging.

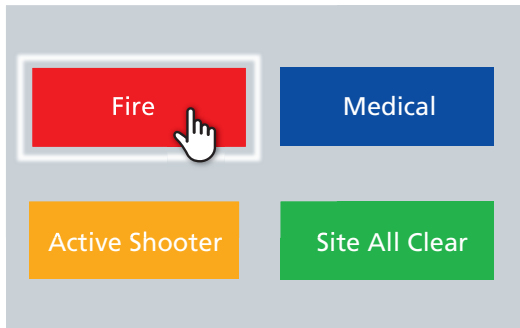


Scenario

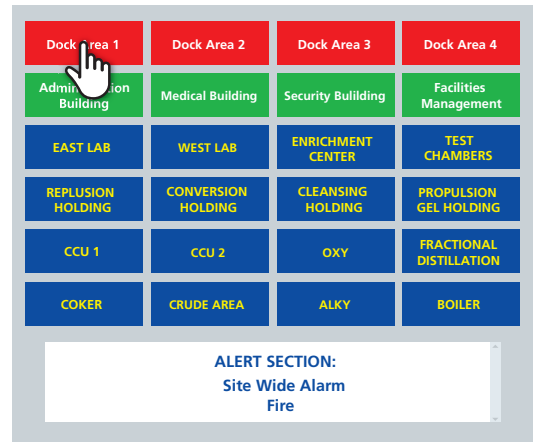


Emergency Manager...a fire broke out in Dock Area 1, and there is a strong wind today from the west. I need to alert all employees of the fire and tell everyone who is downwind that they need to evacuate.

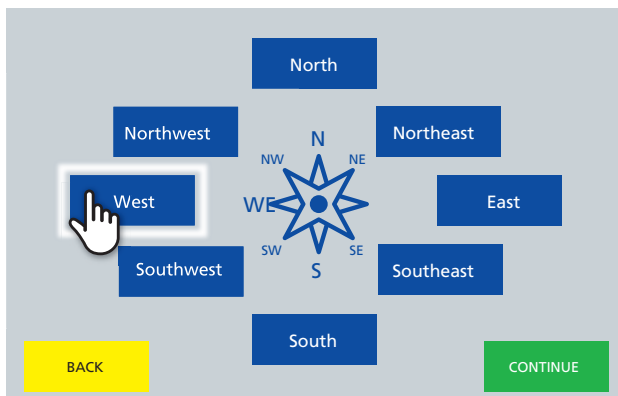
1 Select the incident



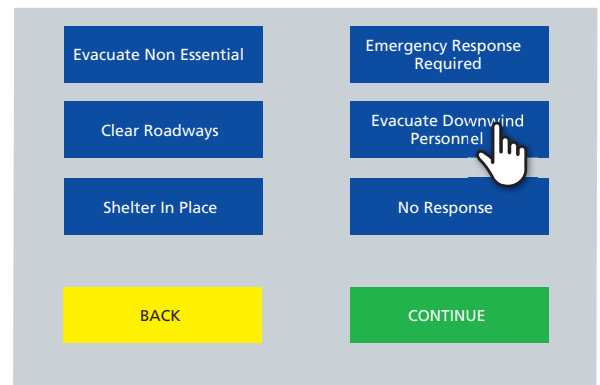
2 Select the Effected Area



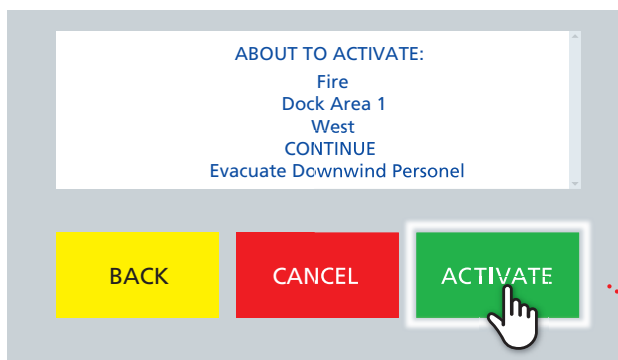
3 Choose Wind Direction



4 Select the Action



5 Deploy the Alert



CommanderAssist® Mass Notification Dynamic Messaging Software

CommanderAssist Functions and Capabilities:



Custom Screen Design

Federal Signal helps you design your user interface around your emergency action plan with a custom screen design. You decide how you want to alert your employees and we work with you to make your plan a reality.



Commander

CommanderAssist runs on the Commander platform, the command and control software that is used to control Federal Signal sirens.



Customized Alerting

CommanderAssist can send alerts to who you want, when you want. Send outdoor or indoor alerts, radio alerts, or any combination. You can create the scenario and who gets alerted and we design the solution.



Radio

Add the optional I-PSIU to play the same tones and messages to all employees over the handhelds that they already carry. Cables for many popular radio models and technologies allow easy connection.



Desktop Alerting

CommanderAssist can also distribute pop-up messages on connected Windows client computers. Your PCs can become a crucial tool in distributing messages to your entire plant. Responses show you who clicked an alert.



Email and SMS

Email and Text messages are an important channel to deliver emergency messages. CommanderAssist has the capability to deliver messages utilizing your current IT infrastructure.

CommanderAssist® Mass Notification Dynamic Messaging Software

HOW TO ORDER

Description	Part Number
Windows application software:	
for up to 10 sites	SFCD10
for up to 25 sites	SFCD25
for up to 255 sites	SFCD255
for up to 511 sites	SFCD512
CommanderAssist	SFCD-A

See your Sales Representative for a quote

PC Requirements

	Server Requirements	Client Requirements
Operating System	Windows® Server 2008 Release 2 Service Pack 1	Windows® 7 Service Pack 1 or newer
Software	Microsoft® NET Framework version 4 Microsoft® Visual C++ 2010 x86 Redistributable Package	Microsoft® NET Framework version 4 Microsoft® Visual C++ 2010 x86 Redistributable Package
CPU Speed	3.0 GHz or higher	2.6 GHz or higher
CPU Processor	Intel® Xeon Processor or higher	Intel®Core Duo, Xeon Processor or higher
Memory	8 GB or higher	4 GB or more
Disk Space	40 GB or higher	100 MB or more
Network Adapter	100/1000 MB TCP/IP IPv4 network card	100/1000 MB TCP/IP IPv4 network card
Sound Card	Simple stereo sound card	Simple stereo sound card
Serial Port	RS 232	232
USB	1 USB	1 USB

CommanderAssist Options

Model #	Description	Notes
I-IPSIUB	Sensor/Radio Interface Unit	19-in rack mount device that allows messages to Land Mobile Radios
X-PCS-22T	Desktop Server with 22" Flat Panel Touch Monitor	A server with a touch screen monitor improves the user's experience when activating CommanderAssist.

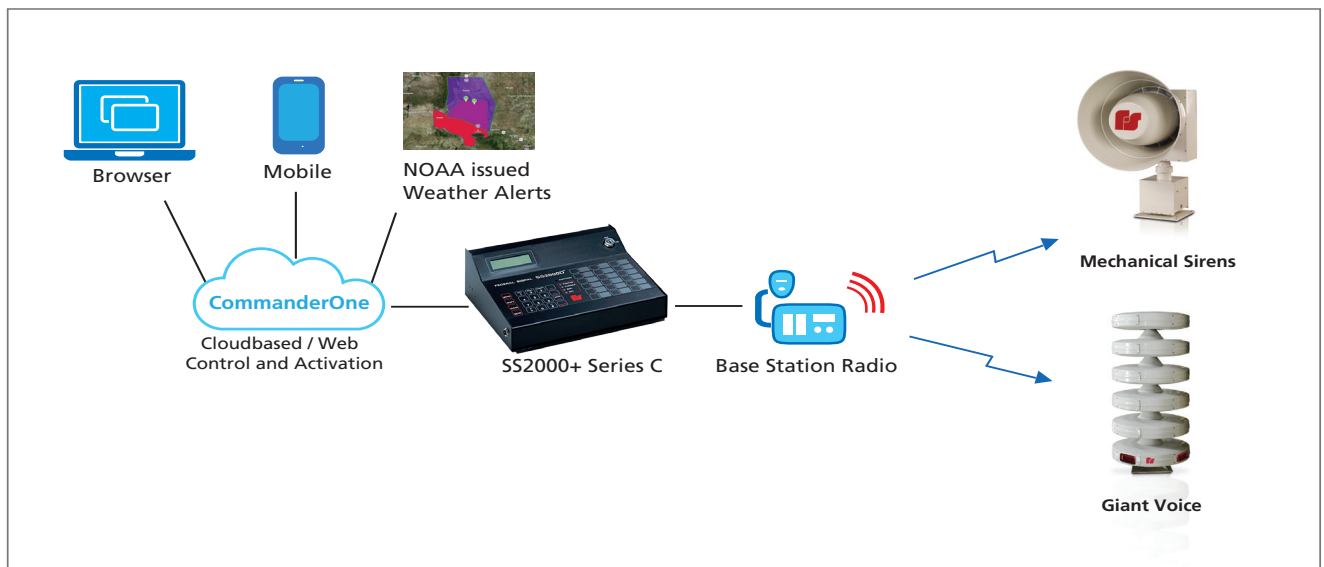
CommanderAssist is a registered trademark of Federal Signal Corporation.

► CommanderOne® LE

Cloud-Based Control for Warning Systems

CommanderOne® LE brings the speed, security and convenience of our Two-Way CommanderOne platform to One-Way siren systems. Now, you can upgrade your One-Way systems to web and app-based control in an easy and affordable way. Utilizing our new CommanderOne-enabled SS2000+ Series C Local Hardware Activation Point, our engineers can quickly setup a CommanderOne LE Account and have you activating your One-Way sirens from a web browser or mobile app with no additional servers or software needed. The SS2000+ Series C is a drop-in replacement for existing SS2000D and SS2000+ owners with Radio-based One-Way systems, hotkeys, functions and settings can be brought over during commissioning.

Weather alerting is important to siren system operators and CommanderOne LE brings Automatic Weather Based Activation to your existing One-Way systems. You can create alert areas around your sirens and set CommanderOne to activate your sirens automatically or with user prompted alerts.



User Experience – The Intuitive Interface is simple to set up, always up-to-date, and connects to your on-premise Commander control system.

Desktop Freedom – Access your system from any computer connected to the internet.

Mobile – A user-friendly app for iOS and Android. It has a web-based console with a mobile responsive GUI.

Security – We understand that security is your top priority. CommanderOne utilizes IPSEC over SSL with a multi-layered authentication mechanism.

Weather Activation – All CommanderOne systems will have access to activate sirens based on weather-based polygons.

Auto-Sync Hotkeys – No need to keep multiple locations synchronized, your Hotkey activation settings are automatically created in CommanderOne.

Messaging – Keep in contact with employees and first responders via email, SMS, and voice. Create on the fly messages or templates to streamline your workflow.

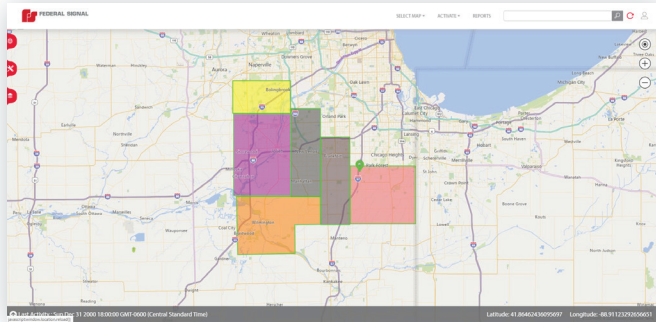
Scalability – CommanderOne platform is scalable from a few devices to hundreds of devices. It leverages a global network of data centers to maintain availability while securing your data.

CommanderOne® LE Cloud-Based Control for Your Warning Systems

Desktop and Mobile

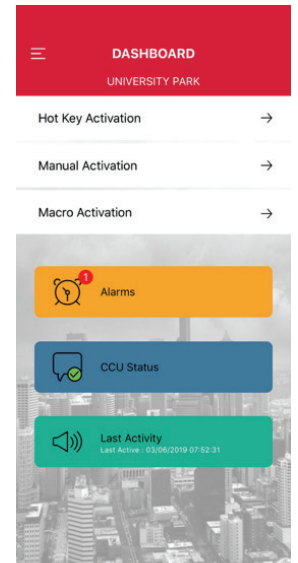
Desktop

HotKeys are automatically pushed to the web by the SS2000+ Series C, so you can easily activate from a web browser interface. The HotKeys can be color coded on the web for ease of use.



Mobile

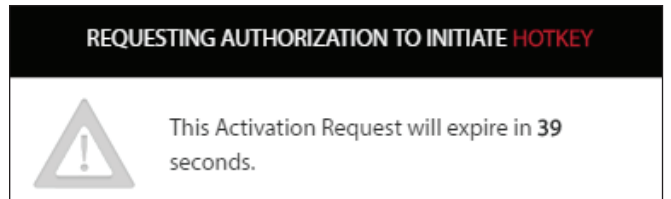
iOS and Android apps let you control and monitor your system from virtually anywhere. It shows all HotKeys by a single click.



Security

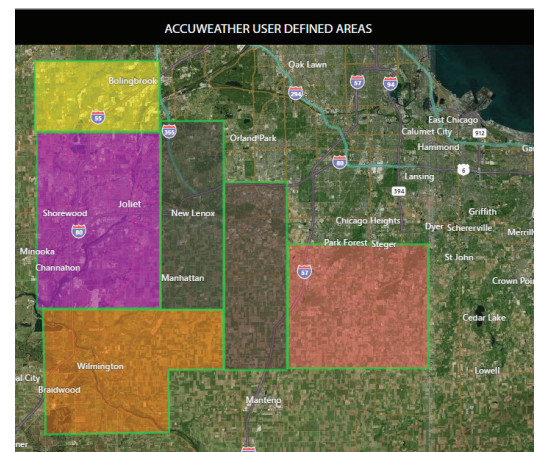
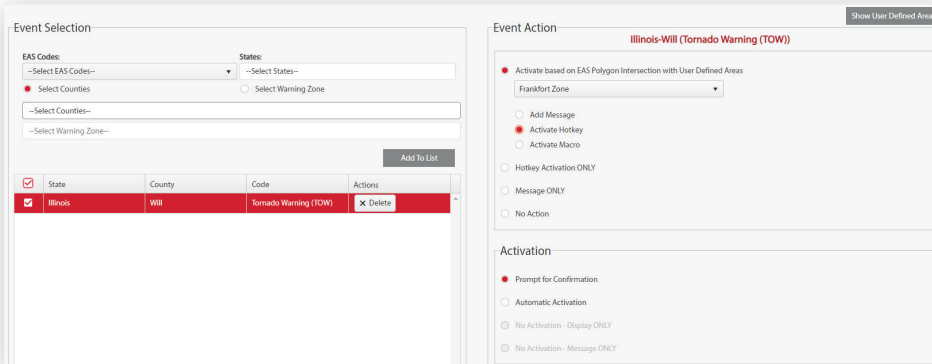
CommanderOne LE is secure by design. We use One Time Passwords, Token-Based Security and industry standard SSL to secure your communications.

Our new Multi-User Authentication takes security to the next level by allowing you to configure Hotkeys, Macros or Functions with an authorization level, which require varying levels of authorization: from simple passwords to app-based authentication. This means that you can set-up CommanderOne so that no one activates a function without another person verifying that activation, like two people needing their keys turned at the same time to open a locked door.



Weather

CommanderOne LE Accuweather® brings automatic and prompted activation based on weather events. Using a simple if this then that' interface, you choose them from events, such as a 911 telephone outage to a Winter Weather Advisory and the actions associated with them. From the Accuweather interface, you can activate sirens based on National Weather Service events and send messages with optional messaging. *Sold separately*



CommanderOne® LE Cloud-Based Control for Your Warning Systems

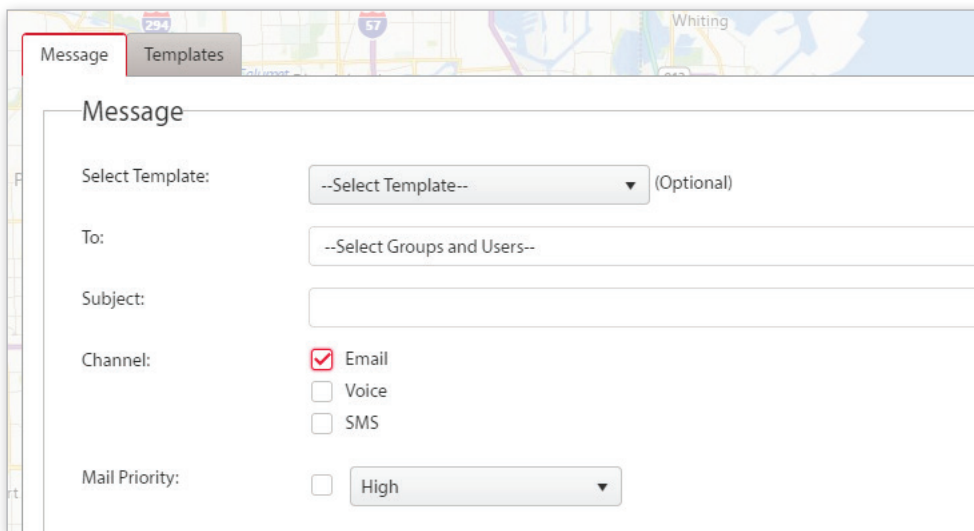
Messaging

CommanderOne LE Messaging is a new addition to the CommanderOne Cloud-Based Control system. Messaging adds the ability to quickly and easily contact your employees using our CommanderOne activation systems, either via the web or mobile app, on your smartphone.

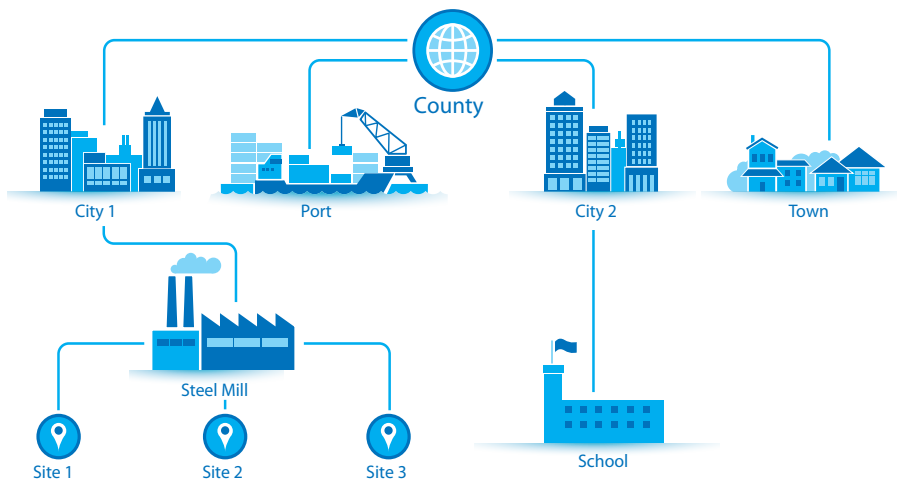
Messaging allows users to create templates, ad-hoc messages and even dynamically add phone numbers or emails at the time of message creation. Utilizing CommanderOne macros, you can activate a siren Hotkey and at the same time, a messaging template. Templates allow for operators to create scenarios ahead of time, adding all users and information in a ready-to-go, one-button activation.

Messaging add-on is designed around you and your first responders, by keeping it simple and easy for you to message your crew while activating the sirens. With simple, easy to understand plans, administrators can add messaging to their existing CommanderOne systems.

Messaging builds upon the strengths of the CommanderOne platform and can allow administrators to send out operational alerts and automated messages the moment NOAA issues alerts.



Scalable Centralized Command and Control



CommanderOne is designed for a centralized command and control by managing disparate systems. Whether you have one site or multiple sites, you need a single dashboard to monitor and manage your network.

CommanderOne 1-Way

Model	Description	Sirens	Users ¹	Basic Weather
Commander1-LE 10	CommanderOne LE Annual Sub	Up to 10	5	Yes
Commander1-LE 25	CommanderOne LE Annual Sub	Up to 25	5	Yes
Commander1-LE 255	CommanderOne LE Annual Sub	Up to 255	5	Yes

*Includes Remote Implementation Support. For on-site support and training, contact your Federal Signal representative for a quote.

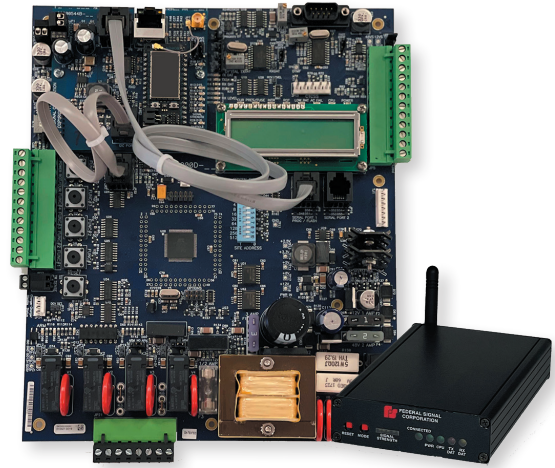
CommanderOne with Messaging

Model	Description	Users ¹	Recipients ²	Messages Per Month
Commander1-SM	Standard messaging annual	5	200	500

*Includes Remote Implementation Support. For on-site support and training, contact your Federal Signal representative for a quote.

¹ Users: Users defined as full ability to activate and create messages also includes CommanderOne APP. (Admin has ability to control USER rights)

² Recipient: Recipient defined as having the ability to receive messages via text or email.



▶ FSIoT Solutions

Federal Signal IoT Solution

Federal Signal has created a new option for siren communication with the FSIoT Solutions family of products. These devices allow easy connection to the Federal Signal managed cellular IoT network allowing you to quickly upgrade from legacy radio technologies to a secure cellular communications.

The FSIoT gateway and siren communication kits connect to our managed cloud eliminating the need to purchase a data plan from a provider, procure SIM cards, and manage network access and security. The devices are configured before shipment and are ready to go as soon as they are taken out of the box.

FSMODEM-CELLBASE allows you to easily add cellular connectivity to a base station with USB or serial connection and our Commander® On-Premise Siren Control and Messaging System. The modem then connects to the FSIoT network via a cellular antenna, or alternatively can be plugged into an existing Ethernet network in the case that antenna runs are too long or impractical. FSMODEM-CELLBASE can also be used with the SS2000+ Series C local activation point in place of a conventional LMR radio.

The FCT and FC Kits allow for easy retrofit of existing Federal Signal FC and FCT siren controllers. These kits allow users to switch away from legacy LMR solutions or add secure cellular communications as a secondary communication channel, enhancing redundancy.

FEATURES

- Easily add cellular communications to existing systems
- Secure managed cloud service
- Replace legacy LMR or add redundancy

Description

Part Number

FSIoT Gateway Modem for Base Station/SS2000+

FSMODEM-CELLBASE

FCT Kit

Q-FSCCELLKIT-FCT

FC Kit

Q-FSCCELLKIT-FC

FSIoT data plan one year (per device charge)

CP-FS1

FSIoT account setup (one time charge)

CP-FSSETUP

RTU modem service part

Q20000544C

Each base station or RTU modem will require an antenna, add the antenna kit that best suits your installation

Omni antenna Kit with 15" cable and pole mounting bracket

CELL-ANT1



► COMMANDER1-LIGHTNING

CommanderOne® Lightning Alerting

Federal Signal's Lightning Alerting is an addition to our flagship CommanderOne® siren activation and monitoring system. This feature is ideal to alert industrial or chemical plants, outdoor recreational areas, parks, and campuses where lightning is a threat to employees and communities.

Lightning Alerting extends the weather capabilities of CommanderOne by allowing users to define a Lightning Point, choose up to 2 radii, and customize the emergency communication within each radius. When lightning is detected within a radius, you can quickly activate emergency communications such as outdoor sirens, email notifications, and text messages for each radius.

Included in Lightning Alerting feature is (DND) Do Not Disturb and Snooze Intervals. The DND features allows the user to set times in which alerts will not be activated when the plant is closed. The user can also set up Snooze Intervals within the app which will allow you to pause notifications to avoid over alerting.

Users can also specify an All Clear action. All Clear is used to end events by sending out messages, tones or turning off any visual signals. Use all clear to let users know that lightning has not occurred for a specified time and it is safe to resume activities.

FEATURES

- Allows user to place lightning points and desired radius
- Snooze Interval defines time to pause notifications to avoid over alerting
- Do Not Disturb offer the ability for users to choose what times to not receive alerts



CommanderOne® Lightning Alerting can be used with CommanderOne and Commander® LE

COMMANDER1-LIGHTNING CommanderOne® Lightning Alerting

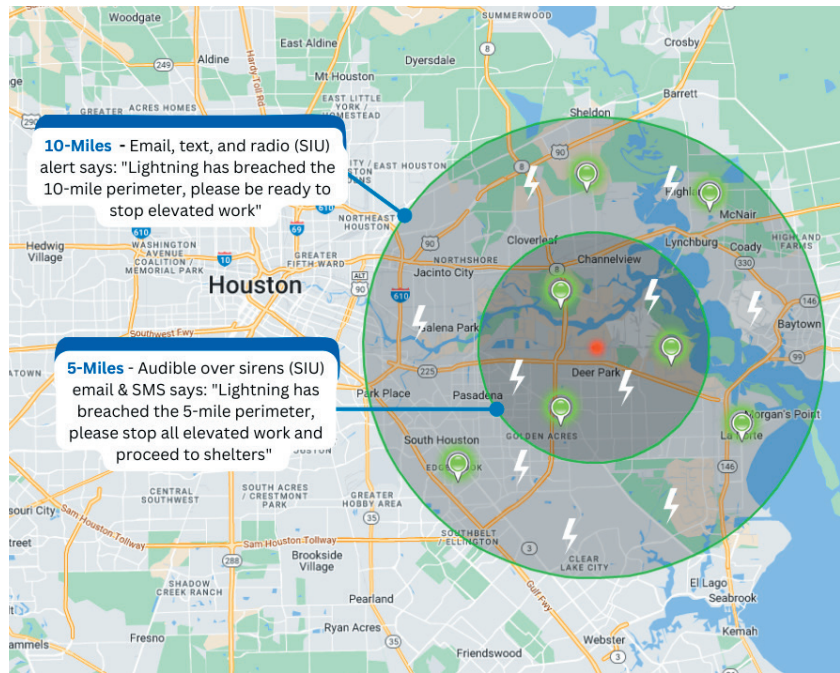
Scenario:



Emergency Manager: Lightning has breached the 10-mile radius. I need to alert all employees to be prepared to stop elevated work.



Emergency Manager: Lightning has breached the 5-mile radius I need to activate the audible alarms to let all employees know to stop all elevated work and proceed to shelter.



Select Base CommanderOne Model for Annual Subscription

	Standard	Professional	Enterprise
Model Number*	COMMANDER1-S	COMMANDER1-P	COMMANDER1-E
Number of Users ¹	5	20	Per quote
Number of Organizations	1	2-5	5+
Accuweather included	Yes	Yes	Yes
In Release Commander Upgrade	Yes	Yes	Yes

*Includes Remote Implementation Support. For on-site support and training, contact your Federal Signal representative for a quote.

CommanderOne Select Model Add Ons

Model Number	Description
COMMANDER1-L-POINT	Each CommanderOne Lightning Point
COMMANDER1-M	500 messages per month
COMMANDER1-PORTAL10K	10,000 messages per month with self management

¹ Users: Users defined as full ability to activate and create messages also includes CommanderOne® APP. (Admin has ability to control USER rights)



► Model MAC-01/MAC-02

Mobile Activation Case Portable radio activation system

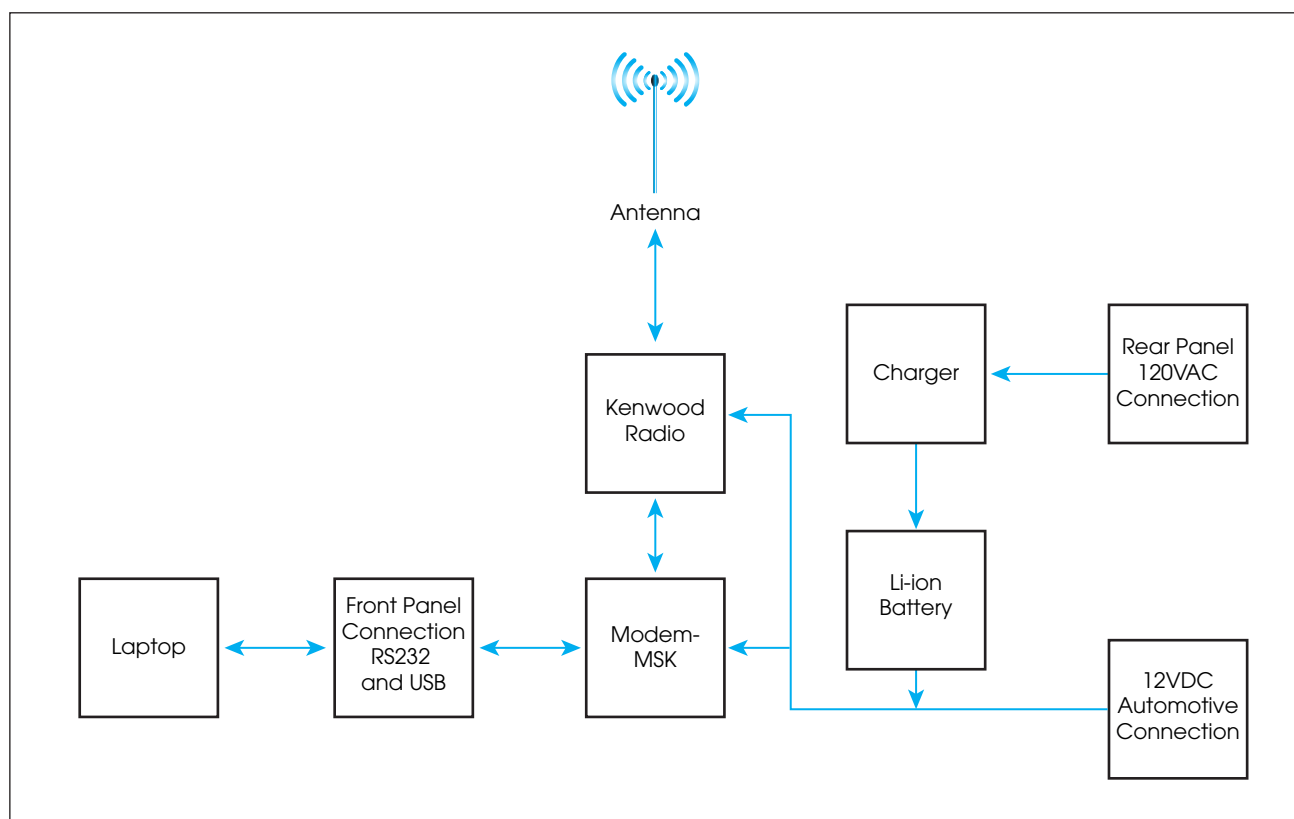
Federal Signal's Mobile Activation Case (MAC) is a portable radio activation system that enables Federal Signal customers to activate their outdoor warning system using radio controls. The Mobile Activation Case comes in two versions, the MAC-01 supports VHF radio networks and the MAC-02 supports UHF radio networks. The MAC-01/MAC-02 is a portable, self-contained radio transceiver with Modem-MSK support, and battery backup. This solution includes a water-resistant backpack for storage, and cables to connect to a user supplied laptop. Federal Signal Commander software is required in order to activate the system.

F E A T U R E S

- 30 Watt radio transceiver installed (VHF or UHF)
- Federal Signal Modem-MSK universal transceiver
- USB port and backup RS232 port for connecting to your laptop
- USB and RS232 serial cables
- Bulkhead mounted female BNC antenna receptacle
- Rubber duck antenna
- Long-lasting rechargeable Li-ion battery with built-in battery charger
- Eight hour standby operation followed by one hour continuous radio polling operation without AC power, with radio at 10 Watts.
- Ten foot male-male fused automotive accessory power cable to interface 12VDC automotive accessory power receptacle
- AC power receptacle to charge internal battery with removable AC power cable
- Padded water-resistant backpack to store and carry MAC-01/MAC-02 and laptop computer*

* Laptop computer equipped with Federal Signal Commander software must be customer supplied.

Mobile Activation Case – Portable radio activation system (MAC-01/MAC-02)



SPECIFICATIONS

- Utilizes Kenwood NX-700/800 radio
- Front access USB and RS232 ports for PC access
- Front access Modem-MSK radio interface
- Front access BNC antenna port
- Rubber duck antenna standard, other options available
- 120VAC or 12VDC power input (AC input required to charge battery)
- 12V 5Ah Li-ion rechargeable battery
- Onboard 1.5 Amp battery charger
- Operating temperature -30C to +65C
- Humidity range 0-95% non-condensing
- MAC-01/MAC-02 weight 12.5 lbs (5.7kg)
- MAC-01/MAC-02 size (H x W x D) 4" x 10" x 13" (10cm x 25cm x 33cm)

HOW TO ORDER

Description	Part Number
Mobile Activation Case, VHF	MAC-01
Mobile Activation Case, UHF	MAC-02



MAC-01/MAC-02 shown with included accessories.

REPLACEMENT PARTS

Description	Part Number
Replacement Battery	Q15500483